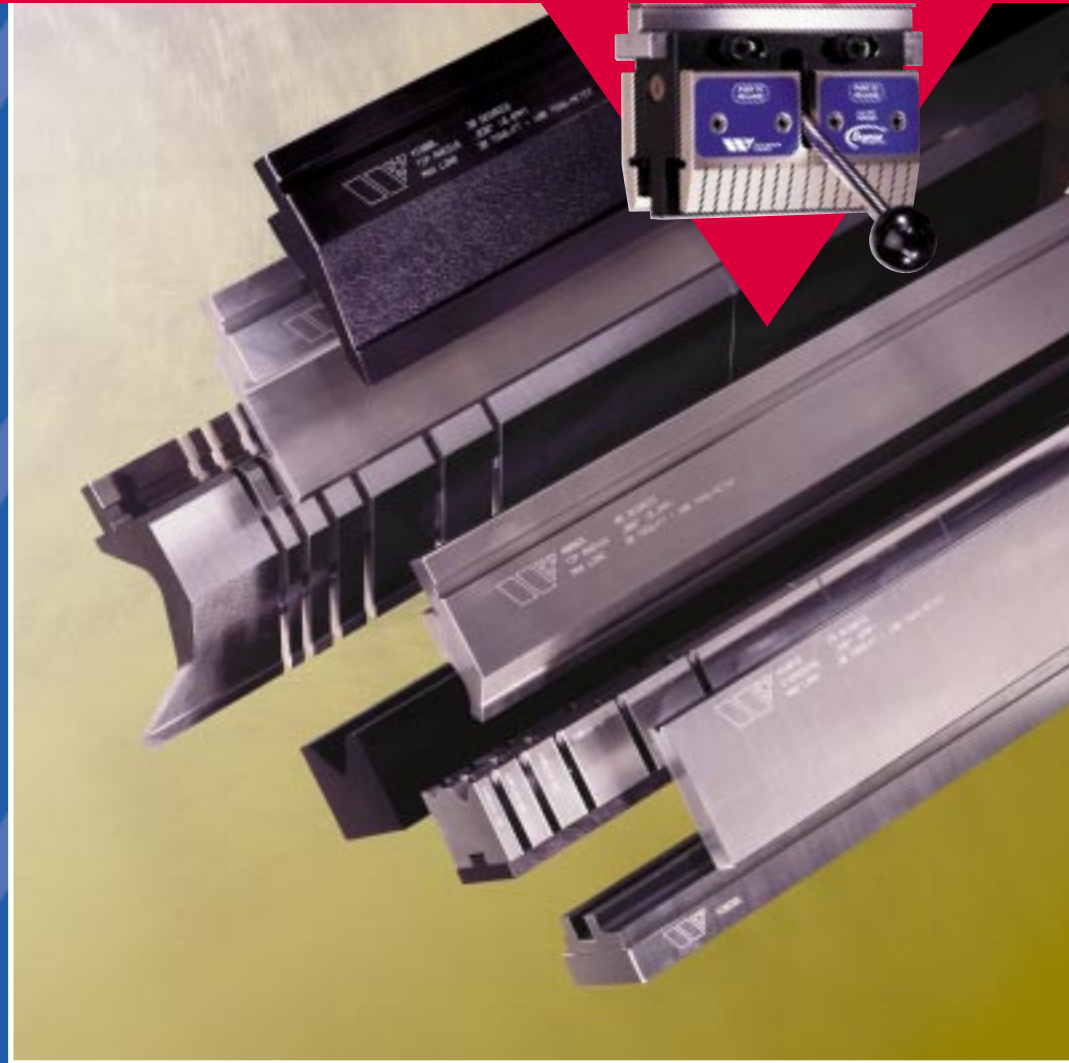
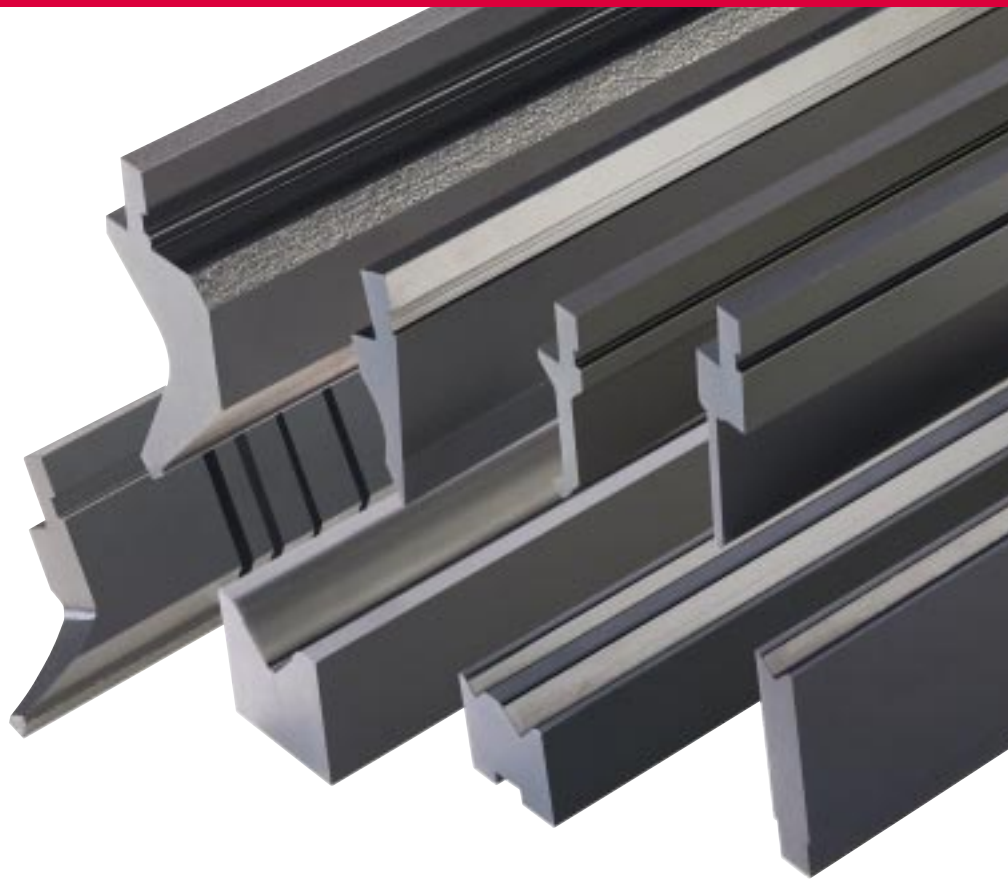


# EUROPEAN STYLE PRESS BRAKE TOOLING



Wilson Tool International has become recognized as the global leader in press brake technology. Wilson Tool Press Brake Tooling provides the most innovative, durable and precise tools available for European style press brake tooling. For maximum strength and durability, all punches and dies are manufactured with the highest quality steel. Wilson Press Brake Tools also are precision ground for increased productivity and reduced scrap. To ensure total quality control and quick delivery time, Wilson Press Brake Tooling is manufactured at Wilson Tool's state-of-the-art press brake tooling manufacturing facility. Rely on Wilson European Press Brake tooling for:

- ▼ Reduced set-up times (most tools can be changed in a matter of seconds)
- ▼ Punches and dies manufactured from proprietary, high-alloy, aircraft quality steel and through-hardened to 45-50 Rockwell C-Scale for maximum strength
- ▼ Common centerlines on all punches, eliminating costly time spent locating the back gauge origin position and the subsequent scrap
- ▼ Precision ground tooling to a tolerance of +/- .0008" (.02mm) on all critical dimensions
- ▼ Safety tongue standard on all punches
- ▼ The world's largest selection of Quick Change 2V and 1V Dies
- ▼ Sectionalized tools pre-cut in nine different pieces



### ***Extend The Life Of Your Tools With Nitrex™***

Nitrex™ high endurance surface enhancement, exclusively from Wilson Tool, increases press brake tooling life by several times that of standard tooling. With a surface hardness of HRC-60, Nitrex adds lubricity to press brake tooling and lowers the coefficient of friction as the steel slides over the shoulder of the V-opening on a die. Any Wilson Tool press brake punch or die can be enhanced with Nitrex and all of Wilson Tool's large 1V press brake dies now come standard with Nitrex.

*Nitrex™ High Endurance Surface Enhancement U.S. Patent Number: 6,327,884 B1*

## WILSON EXPRESS CLAMPING SYSTEM™

***The Wilson Express Clamping System™ is a technological breakthrough for press brake operators. This highly advanced series of punch holders is designed to allow fast and easy set-up for almost any press brake system. Punches can be loaded in a matter of seconds. Best of all, the Wilson Express Clamping System is available for virtually all makes and models of press brakes for increased productivity and profitability, including European (Promecam®), American, Amada® Z2 and Trumpf® style press brakes. Additional features found in the Wilson Express Clamping System include:***

- ▼ Dual clamping is standard, making it possible to load punches with the relief area facing forward or toward the rear of the machine
- ▼ Front and rear clamps are opened and closed simultaneously when the locking lever is actuated
- ▼ Unlike other “quick-clamp” systems, the Wilson Express Clamping System is designed for use of standard European (Promecam) style press brake tooling with a safety groove, eliminating the need to purchase additional special tooling
- ▼ The mechanical design of the Wilson Express Clamping System does not require hydraulics
- ▼ The versatile Wilson Express Clamping System is available for virtually all makes and models of press brakes—with and without adjustment wedges



*Express Clamping Systems for:*



*Amada® Z2 Style  
Press Brakes*



*American  
Press Brakes*



*Amada® Z1 and most  
European (Promecam®)  
Style Press Brakes*



*Trumpf®  
Press Brakes*

*"Our goal is to deliver the most reliable, innovative, durable, and consistent tools, such that our customers can be the most successful fabricators in the world."*

[www.wilsontool.com](http://www.wilsontool.com)

The three divisions of Wilson Tool—**Punch Press, Press Brake** and **Impax®**—add up to the most comprehensive, innovative and highest quality line of tooling available. Every tool we deliver undergoes rigorous inspection to ensure precision.

Wilson Tool is also committed to delivering the highest standard of customer service in the sheet metal fabricating industry. In addition to the industry's highest quality products, only Wilson Tool customers have access to unique benefits, such as:

- ▼ The industry's largest, best-trained multilingual customer support staff
- ▼ The most knowledgeable and accessible global sales force
- ▼ Unrivaled same-day shipping to help keep you one step ahead of your competition and serve your customers better
- ▼ A comprehensive Web site providing instant access to company news, product specifications and online ordering information
- ▼ Offices in China, Denmark, Germany, the United States and United Kingdom and an extensive distribution network to serve international customers

For the most comprehensive package in the sheet metal fabricating industry, count on the world leader: **WILSON TOOL**.



**Press Brake Tooling Division**

12912 Farnham Avenue  
White Bear Lake, MN 55110

Tel (Free): 800-328-9646

Fax (Free): 800-222-0002

Email: [pressbrake@wilsontool.com](mailto:pressbrake@wilsontool.com)

[www.wilsontool.com](http://www.wilsontool.com)